

Christ Lutheran News

January, 2012



It is never too late to begin a new habit – or to recovenant our side of the promise with God – or to name anew the responsibilities we have as faithful people. The following serves as a model for living our faith in the New Year – 2012.

- Mend a quarrel
- Seek out a forgotten friend
- Dismiss suspicion; replace it with trust
- Give a soft answer
- Encourage youth
- Keep a promise
- Find the time
- Forego a grudge
- Forgive an enemy
- Listen
- Apologize if you are wrong
- Try to understand
- Think first of someone else
- Appreciate
- Be kind; be gentle
- Laugh a little
- Laugh a little more
- Welcome a stranger
- Speak your love
- Speak it again
- Speak it still again.



We will seek God's will, share God's love, and serve as Christ's people.

Saturday:

5:15 pm Saturday Evening Worship with Holy Communion

Sunday:

9:00 am Sunday School — Preschool through Adult
 10:15 am Worship (Holy Communion 1st and 3rd Sundays)

Broadcasts:

Sunday, 11:30 am Worship broadcast on Radio KJOE FM 106.1
 Tuesday, 10:00 am Worship on Television Channels 3 & 67

Executive Council

Jan Cuperus, President
 Court Tommeraasen, Vice President
 Sandy Stokesbary, Secretary
 Kathy Behrends, Treasurer

Inside this issue:

Pastor's Column	4
Council Minutes/Snow Policy	6
Financial Information	10
Annual Mtg/New Members	11
FaithChest Ministry	13
Service Opportunities	14
Tip Night /Thank You	15
Calendar	18
WCLC	20
Ministry Opportunities	25
Fellowship	26
Youth	28
Canews	30
Worship Assistants	32
Birthdays & Anniversaries	34

**Remember to check us
 out on the Web ...**

**christinslay-
 ton.lutheranweb.net**



**"Slayton Christ
 Lutheran Church"**

Would you prefer to read your
 newsletter online or by e-mail?
 Please e-mail us:
 slaytonchrist
 lutheran@gmail.com

Church Office: 836-8291

Street Address: 2959 Queen Avenue, Slayton, MN 56172
 E-mail: slaytonchristlutheran@gmail.com
 Website: christinslayton.lutheranweb.net
 Dawn Mouw, Office Manager
 Dale Lange, Custodian

Pastor Ted Kunze

Parsonage (home): 836-8136
 cell phone: 507-995-4277
 E-mail: pastorkunze@gmail.com

Pastor Craig Nissen

Parsonage (home): 335-7855
 cell phone: 712-348-4740
 E-mail: chilepastor@frontiernet.net

Prayer Requests

Call the church office at 507-836-8291, or e-mail us with your prayer requests. If you want a pastoral visit or would like to be included in pastoral prayers during worship, please call the church office.

Address, Phone & Email Corrections

Christ Lutheran maintains a database of all members. If you have had any changes to your address, phone number, marital status, etc. please contact Dawn with your name and the changes that need to be made.

If You Are Ill

Hospitals no longer notify churches when their members are admitted for care. Call 507-836-8291 and let us know so we can support you with prayer and with presence.

GOOD NEWS!

As I write this, *we are still well within the 12 Days of Christmas!* The 12 days begin with Christmas Day. In the Church calendar, the season of Christmas ends with Epiphany, when the visit of the Magi (wise men) is traditionally celebrated. That's Friday, January 6. Wish someone a Happy Epiphany to see how they look at you.

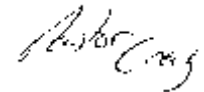
I'm never in a big hurry to let go of Christmas. That's compounded since we don't have Parker & Carter with us for Christmas Eve or the Day, and because we haven't had any snow, AND because I was down with the flu for all of Christmas Eve. More than ever I find myself wanting to stretch out the season of Christmas. This season that the world is ready to pack away.

When Christmas is only an excuse to give presents, get presents, throw a party, it makes sense, to immediately begin looking forward to the next 'special' occasion. But when we see Christmas as a beginning, the first page in the story, and remember that story is also about us, and that it is wonderful, astounding Good News for all people, EVERY day is more than special it's part of the gifts and grace of God.

I'm not suggesting the emotions, the festivities of Christmas can be sustained year-round. I don't think that would be a healthy aim at all, if it were even possible. But all our 'special' occasions in Church life: Christmas, Easter, Ash Wednesday, Maundy Thursday, Good Friday, Pentecost, each Sunday worship, each Lenten service, each funeral, each confirmation class, at quilting days, each Wednesday GLOW, when we serve at The Banquet, etc... And every time you read the scriptures, or pray, or meet for Bible study, & serve your neighbor, God breaks in. The reality of Immanuel, Jesus being born to us, is ongoing ~ we only need to be reminded of this truth & its implications. We've been told of the bigger picture, we realize God's transcendence has spilled over into our lives.

So the season doesn't end, because generosity, hospitality, kindness, love, and hope, have no season, because *the grace of God knows no season.*

Merry Christmas & Happy New Year!



For the grace of God has appeared, bringing salvation for all people, training us to renounce ungodliness and worldly passions, and to live self-controlled, upright, and godly lives in the present age. (Titus 2:11-12)

**Christ Lutheran Church
Executive Council Minutes
Wednesday, December 14, 2011**

President Jan Cuperus called the meeting to order at 8:10 PM. Members present were: Pastor Ted Kunze, Pastor Craig Nissen, Jan Cuperus, Court Tommeraasen, Kathy Behrends, Mary Mesner, Irene Moline, Lynette Sieve, Tom Klein, Karen Onken, and Sandy Stokesbary.

Pastor Ted led devotions from 1 Thessalonians 5:16-18; followed by prayer. A motion to accept the agenda with two additional business items.

The minutes of the November 9, 2011 meeting were approved as printed. The financial report was presented by Kathy Behrends and accepted as printed. Kathy requested guidance on the benevolence payments on hold due to the checkbook balance. A motion was made to meet as a council on December 28, 2011, 7 PM, to evaluate the end-of-year income and needs of early January 2012 if the

ready reserve account at the bank will be necessary.

Pastors' Reports were given by Pastor Ted and Pastor Craig.

Old Business:

1. Keith Rossow has been appointed to the Pastor/Parish Relations Committee.
2. Council recommendation to file the listing of Building Renewal gifts/memorials for the Sanctuary renewal in the Memorial Committee file notebook.
3. The annual meeting will be January 18, 2012, 6 PM dinner served by a Fellowship and Service group, followed by the annual meeting at 6:45 PM. Alternate weather date is January 25, 2012. The Nominating Committee is working on nominations. Reminder that board reports are due in the office 30 days prior to the meeting; December 18th. Please return in ministry description books with any updates or changes.
4. Pastor Ted will take some

(Continued on page 7)

- vacation days, December 30-January 1st. Pastor Craig will use vacation days December 22nd and December 26-29th.
5. There were minimal expenses of \$43 for the "Blue Christmas" worship services. The council consensus was to use some of the Elsie Cole gift for local mission to cover the expenses.
6. Plans for a fund raising event for SMSU Lutheran Campus Ministry at the Pizza Ranch. "Tip Night" utilizes the organization furnishing youth and college students to do the table busing; tips, donations and a percent of the meal cost are donated to the organization. A motion to request Thrivent Choice dollars up to \$200 for matching funds for "Tip Night".

New Business:

1. Review of the proposed agenda for the annual meeting and a motion to accept.
2. Discussion of the annual requests from the pastors for Health Care Flexible Spending Account and Parsonage Furnishing Allowance. These requests are helpful to the pastors for tax purposes, and do not affect the amount budgeted for

- salaries. A motion to approve the requests.
3. The proposed budget was reviewed; recommendations on several items.
4. Request for use of the Fellowship Hall on Friday, December 23, 3-10 PM was approved to follow rental guidelines.
5. The council will meet on December 28, 2011, 7 PM. If a meeting in January is needed prior to the annual meeting, it can be scheduled at that time.
6. Discussion of the envelopes for giving--if the usage justifies the cost of the envelopes. Recommendation to check with the financial secretary as to usage of envelopes and the importance of a numbered system. Possibly, a plain, white envelope could be substituted.
7. Discussion of online giving as a suggestion by the Stewardship Committee. The possible opportunity will be further researched.

Board Reports were given by Mission Outreach, Property and Management, Stewardship, Women of Christ Lutheran,

(Continued on page 8)

Worship and Evangelism, Youth and Fellowship and Service.

Thank you was expressed to Jan Cuperus for the year of leadership as Chair and thank you to all the council members for their dedication and service.

A motion to adjourn at 10 PM. We closed with the Lord's Prayer.

Respectfully submitted,
Sandy Stokesbary, Recording Secretary

If you would like a full copy of the minutes, we have created a mailbox near the Chapel Lounge. Please feel free to help yourself.

**Christ Lutheran Church
Executive Council Minutes—Special Meeting
Wednesday, December 28, 2011**

President Jan Cuperus called the meeting to order at 7:00 PM. Members present were: Pastor Ted Kunze, Jan Cuperus, Kathy Behrends, Court Tommeraasen, Irene Moline, Mary Mesner, Lynette Sieve, Tom Klein, Heidi Winter, and Sandy Stokesbary.

Pastor Ted led devotions from Hebrews 1:1; followed by prayer. A motion to accept the agenda with one addition.

The minutes of the December 14, 2011 meeting were approved as printed.

Treasurer Kathy Behrends reviewed the financial situation to date and discussion followed. A motion to authorize borrowing up to \$6000 on the ready reserve account to meet all of the remaining 2011 expenses, as well as the early January 2012 expenses, was made.

The council reviewed the proposed 2012 budget. A motion was made to approve the proposed budget and present to the congregation at the annual meeting.

(Continued on page 9)

Tom Klein of the Property and Management Committee presented information on three water softening systems to be considered for the church. The goal is to reduce repairs and expenses with the reverse osmosis system by having all of the water softened prior to the osmosis system.

Fellowship and Service Committee have funds available for the purchase and installation of a new water softening system. A motion was made to accept with gratitude the funds from Fellowship and Service and purchase the twin tank system from Slayton Plumbing and Heating at an installed cost of \$3,620.

There will not be a scheduled January council meeting; if there are business items to be

discussed the council could meet briefly after worship service.

A motion to renew the contract with KJOE Radio for the radio broadcast at a cost of \$65 per service was made.

A motion was made to adjourn. We closed with the Lord's Prayer.

Respectfully submitted,
Sandy Stokesbary,
Recording Secretary

If you would like a full copy of the minutes, we have created a mailbox near the Chapel Lounge. Please feel free to help yourself.



Snow Policy

In the event of stormy weather, listen to KJOE Radio for announcements about activities at Christ Lutheran. If school is dismissed early on a Wednesday because of bad weather, GLOW after school activities and evening classes and meetings will automatically be cancelled. Please always use your best judgment about whether or not you should go out in stormy weather. We want everyone to be safe!

On this page you will find a brief overview of the month's offerings. It is our goal to provide you with actual, updated information about Christ Lutheran's financial status.



~Kathy Behrends, Treasurer
& Dawn Mouw, Office Manager

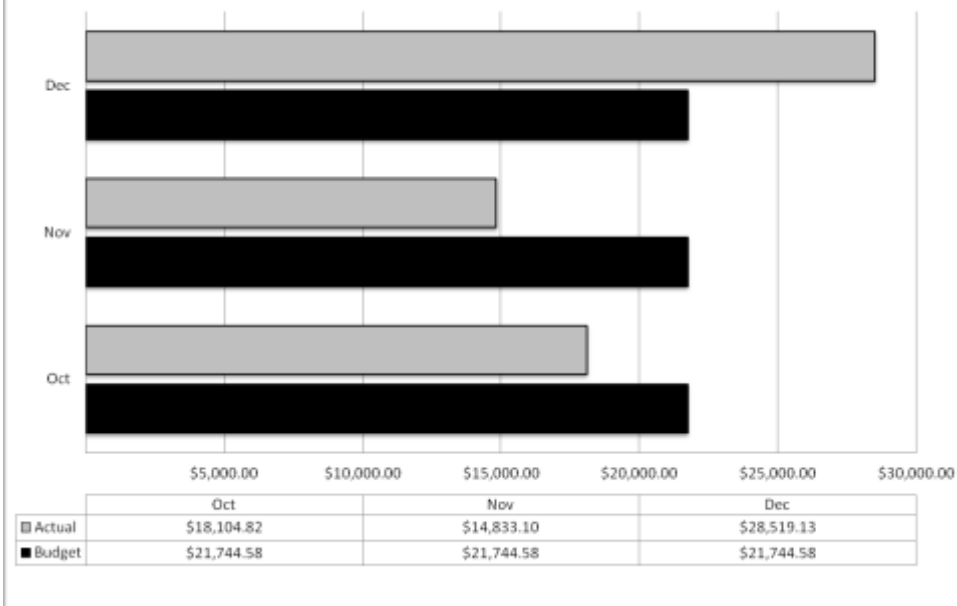
Here's a look at where we were the end of November:

	<u>October</u>	<u>November</u>
Beginning Balance: \$	(5,260.09)	\$ (9,628.75)
Income: \$	22,392.43	\$ 18,809.00
Expenses: \$	26,761.09	\$ 17,141.99
Ending Balance: \$	(9,628.75)	\$ (7,961.74)

(Because of the timing of when the newsletter is published, this information is from the previous month.)

The top, gray bar shows our actual offerings.
The bottom, black bar is our budgeted offering total.

General Offerings - October - December, 2011



Dinner & Annual Meeting January 18

The annual meeting of Christ Lutheran Church has been scheduled for Wednesday, January 18th. A dinner will be served at 6:00 PM by a Fellowship and Service group, and the meeting will follow that, at about 6:45 PM. The annual meeting is an important time as new people are elected to leadership positions on our congregation's boards, and as the budget ministry plan is reviewed and approved for the coming year. All confirmed members of the congregation are welcome, and encouraged to attend. Come for dinner—stay for the meeting. In the event that we get snowed out on January 18th, we will follow the same plan on January 25th.

New Members' Classes

Pastor Ted is making plans for another series of three classes for new members, or for anyone interested in learning more about some basics of our faith. He is planning to offer them on Sunday nights this time, starting at 7:00 PM on January 22nd. If you know someone who is interested in membership at Christ Lutheran, please invite them to this class, and let one of the pastors know contact information for them.

Wise men still seek him!

New Water Softener

The Executive Council has approved the purchase of a new water softener for our church, with funds provided by Fellowship and Service. Previously we have rented a unit which served only the sink and dishwasher in the kitchen, and which cycled on a regular basis. The new system will serve the entire church facility, and will run only as needed by water demand. Slayton's hard water has been hard on our reverse osmosis system for the coffeemaker, causing the need for frequent service calls and changes of filters. Running soft water into it should greatly improve that situation, while the reverse osmosis process removes the salt before it gets to the coffeemaker. Softened water will also reduce the need for cleaning chemicals for the restrooms. Our thanks to Fellowship and Service for this generous gift to our congregation.

Pastor-Parish Committee

The Pastor-Parish Relations Committee met on Tuesday, January 3rd at Christ Lutheran Church. We welcomed our two newest members—Cal Wurpts and Keith Rossow. This committee meets every other month with the pastors to provide feedback, support, and some guidance on the ministry of our congregations. The other members of the Pastor-Parish Relations Committee are Sherri Isder and Bill Neilson from Faith Lutheran, and Jean Asplin and Brenda Loosbrock from Christ Lutheran.

FaithChest Ministry

Starting with this new year, when a child is baptized at Christ Lutheran they will be given a "Faith Chest," a small hinged wooden storage chest. This idea was first promoted by the Youth and Family Institute, now known as "Vibrant Faith Ministries." The intention is that the chest would not only be a memento of baptism, but that as the child grows, it would be a place to hold special "faith milestone" gifts. It may hold their baptismal certificate, candle, and quilt. As they get older it could be a place to keep their Jesus Storybook Bible, and later their first "real" Bible, a memento of their First Communion, Confirmation, etc. It is a tangible reminder to them of the love of the congregation and, more importantly, the love that God has for them.

The chests were made by Rueben Boxrud, Chuck Terry, and Jon Hoyme. The Memorial and Endowment committees each provided some funds for this project, and Tom Klein donated some supplies and materials. Thank you to all who helped with this project! If you are interested in learning how to make one yourself (and maybe help the next time a group of chests are built), contact the church office (836-8291) or Jon Hoyme at 763-1568.

We've had some inquiries about pur-
chasing one of the chests. They may be purchased for \$65, with the money going in to a special fund for supplies for future builds.



“Giant-Print” Bibles

The Endowment Fund has purchased a case of “Giant-Print” Bibles to make available to people with diminished eyesight. The print in this article is approximately the size of the print in the Bibles. Many have already found these Bibles helpful. If you would like to have one, or see if it might work for you, come to the church office. There is no charge for these Bibles—they are a gift of the Endowment Fund.

Bulletin Board “Artist” Sought

Carisa Clarke has been taking care of the bulletin board in our narthex area, changing it from time to time to reflect seasonal themes. She has done a great job, and we thank her for it. She has asked us to find a replacement now, however—or maybe someone to partner with her. If this is something that you think you might enjoy doing, please speak with Carisa or one of the pastors.

The Banquet

Mark your calendars for serving at The Banquet Saturday, April 28th. This is a great eye-opening service project for our congregation. Confirmation students are expected to participate, especially if they have not been able to help in other projects this year. It's prom weekend, but this was the only date that opened up for us to serve -- we're so glad The Banquet has many groups offering to help.

Pizza Ranch “Tip Night” January 16th For Campus Ministry

Christ Lutheran will hold a fundraiser at the Slayton Pizza Ranch to benefit Lutheran Campus Ministry in Marshall. The event is called a “Tip Night” and will be held from 5 to 8 PM at the Pizza Ranch. Volunteers from Christ Lutheran and from Lutheran Campus Ministry will help bus dishes that night for “tips” put into a metal bucket by the door. Those tips will go to Lutheran Campus Ministry, as well as a percentage of the sales that night. Christ Lutheran will match up to \$200 raised that night from our “Thrivent Choice” fund.

Lutheran Campus Ministry is an outreach ministry of the Evangelical Lutheran Church in America to students (and faculty) at Southwest Minnesota State University in Marshall. It provides worship opportunities, fellowship events and Bible studies from the Campus Religious Center across the street from the campus. They are planning a mission trip to Mississippi later this winter, and this event will help with some of those travel expenses.

Join us for some good pizza from the buffet or order your own, and help to support Lutheran Campus Ministry.



Thank you so much for the donation of coats, scarves, hats and mittens. We are so appreciative of your thoughtfulness and kindness. No one will have to be cold this winter.



Thanks so much and God bless you all. Sincerely,
Clothing Shelf Volunteers.

Thank You to Lorna Bader and family for the gift of \$1000 for the Geothermal project in memory of Dr Jean Bader.

Christ Lutheran,

Thank you so much for your gift and for inviting me to be with you in worship. We are so excited to be gathered around Christ's Word and to be thinking about a servant trip over spring break. Thank to all of you who pray for the students and for us as we reach out to meet the needs on campus! God's Blessings to you this Christmas Season!

Juanita Harberts
Lutheran Campus Ministry

Thank you to Terry Larson for all of your time cleaning and trimming the church grounds this fall. Your work is very much appreciated.

Ministerial Act

Funeral~

Nick Hansen—passed away December 8

Funeral held at Christ Lutheran on December 13

Kathryn Cole, Stan Dahlgren, Dick & Elaine Donaldson, Gage Driver, Mary Entinger, Delrose Hegstad, Twyla Hungerford, Brady Johansen, Julia Johnson, Alan Kramer, Marilyn Lamp, Donna Lange, Richard Moe, Ron Muecke, Dana Pedersen, Mike, Lynda & Devan Petersen, Joan Rupp, Chuck Schmahl, John Schreier, Donna Scott, Pastor Laurie Skow-Anderson, & Harold Yotter

Continue to remember in prayer ~

- ◆ Those dealing with cancer and other long-term illnesses.
- ◆ Members who are shut-in
- ◆ Service men and women
- ◆ Those who mourn the loss of loved ones



Help Wanted ...

Ushers, Communion Servers, Lectors, Power Point, Greeters, Video Tapers and Bread Bakers. Please check out the sign up sheets in the back of church on the door. Please sign up if there are any of these jobs you are not currently helping with and could help with. Training is available for anyone who would like it. What a great way to meet other members and work together to serve our Lord!!!! Thank You!

-The Worship and Evangelism Committee

Christ Lutheran's Calendar for January, 2012

Sun	Mon	Tue	Wed	Thu	Fri	Sat
1 New Year's Day 9:00 NO Sunday School & Adult Class 10:15 Worship w/ Holy Comm Coffee Fellowship	2 8:00 Chair Yoga Pastor Ted's Day Off	3 8:00 Chair Yoga 9:00 Comm @ Sunrise Terrace 10:00 Worship on Channels 3 & 67 10:15 Comm @ Golden Liv Noon Sack Lunch Bible Study 7:30 Pastor Parish Committee	4 9:00 WCLC Board Meeting 3:30 GLOW 7:00 Confirmation for 7-9 7:00 Choir 8:30 HS Small Group	5 8:00 Chair Yoga 5:15 Bible Study Leaders 7:00 Endowment Fund Meeting	6 Pastor Craig's Day Off	7 5:15 Worship w/ Holy Communion
8 9:00 Sunday School & Adult Class 10:15 Worship Coffee Fellowship	9 8:00 Chair Yoga 7:00 Love Circle Pastor Ted's Day Off	10 8:00 Chair Yoga 10:00 Worship on Channels 3 & 67 10:15 Comm @ Lindenwood Noon Sack Lunch Bible Study	11 9:30 Peace Circle 1:30 Faith Circle 3:30 GLOW 7:00 Confirmation for 7-9 7:00 Choir 8:30 HS Small Group	12 8:00 Chair Yoga	13 Pastor Craig's Day Off	14 5:15 Worship w/ Holy Communion
15 9:00 Sunday School/NO Adult Class 10:15 Worship w/ Holy Comm Coffee Fellowship 7:00 Movie Night	16 8:00 Chair Yoga 5-8 "Tip Night" @ Pizza Ranch Pastor Ted's Day Off	17 8:00 Chair Yoga 10:00 Worship on Channels 3 & 67 Noon Sack Lunch Bible Study	18 3:30 GLOW 6:45 Annual Meeting	19 8:00 Chair Yoga	20 Pastor Craig's Day Off	21 5:15 Worship w/Holy Communion
22 9:00 Sunday School/NO Adult Class/Food Safety Training 10:15 Worship Coffee Fellowship 7:00 New Members Class	23 8:00 Chair Yoga 1:00 Quilting Pastor Ted's Day Off	24 8:00 Chair Yoga 10:00 Worship on Channels 3 & 67 Noon Sack Lunch Bible Study 1:00 Quilting	25 3:30 GLOW 6:45 Annual Meeting Snow Date 7:00 Confirmation for 7-9 7:00 Choir 8:30 HS Small Group	26 8:00 Chair Yoga	27 Pastor Craig's Day Off	28 5:15 Worship w/Holy Communion
29 9:00 Sunday School & Adult Class 10:15 Worship Coffee Fellowship 7:00 New Members Class	30 8:00 Chair Yoga Pastor Ted's Day Off	31 8:00 Chair Yoga 10:00 Worship on Channels 3 & 67 Noon Sack Lunch Bible Study		Pastor Ted Kunze Pastor's Home # 507-836-8136 Cell Phone # 507-995-4277 E-mail: pastorkunze@gmail.com	Pastor Craig Nissen Pastor's Home # 507-335-7855 Cell Phone # 712-348-4740 E-mail: chilepastor@frontiernet.net	Worship Service is broadcast every Sunday morning @ 11:30 am on KJOE FM



Our Mission:
To mobilize women to act boldly on
their faith in Jesus Christ.

January Visitation: Peace Circle

Bible Study Leaders

Thursday, January 5 at 5:15 pm

Peace Circle

Wednesday, January 11 at 9:30 am
Bible Study Leader—Margaret Nelson
Hostess—LeAnn VanMeveren

Faith Circle

Wednesday, January 11 at 1:30 pm
Bible Study Leader—Ruthie Nelson
Hostess—Joyce Larson

Love Circle

Monday, January 9 at 7:00 pm
Bible Study Leader—Karen Tommeraasen
Hostess—Sandy Stokesbary

Quilting

Monday, January 23 and
Tuesday, January 24 at 1:00 pm

January Study: Confessing Christ

“I believe; help my unbelief!”
-Mark 9:24

WCLC Highlights from December, 2011
and January, 2012

- Mission Action reports that recently 12 quilts were donated to the local Head Start program, 20 quilts to the Murray County Christmas Project, and 21 quilts to the Furniture Mission in Sioux Falls. The total number of quilts given out in 2011 was 176.
- The Christmas project to remember residents at Golden Living Center with a new fleece lap throw was well supported. Thank you to all who donated fleece throws or monetary gifts. The residents are enjoying them. Several were also given to church members at Lindenwood and Sunrise Terrace and 17 were given to the Murray County Christmas Project.
- The 2012 WCLC hand booklets are printed and available for all women of the church. Please pick up your copy from your church mailbox. Special thanks to Dawn, in the church office, for preparing the layout and printing of the booklets.
- End of the year disbursement of funds was made with a total of \$1100 given to various organizations and needs.
- The board expressed appreciation for the great 2011 leadership of Karen Onken, Chair and Bernice Gass, Secretary.
- Christ Lutheran will be hosting the WELCA Shetek Spring Gathering on Saturday, April 14, 2012. Plans are in the process.
- **WCLC Board will serve coffee January 22 following worship. Proceeds will go to the Malaria Net Project.**
- Our next meeting will be Wednesday, February 1 at 9:00 am

Food Safety Training

Women & Men ... If you ever work in the kitchen, or help serve food, it's important that you attend this one hour training. Join us at one of the following times in the Chapel Lounge:

Sunday, January 22, 9:00 am

Wednesday, February 1, 7:00 pm

Baked Potato Dinner

Sunday, February 12

\$6 per person; \$25 for a family
5 and under Free



We will be calling for people to help work, furnish pies or donate cash.

Cafe' is an award-winning, on-line magazine from Women of the ELCA that features timely articles about faith and life, Scripture reflections, and an opportunity for sharing your thoughts with others.

This free and monthly e-zine is addressed primarily to women ages 18 to 35, but its articles will inform and inspire women of all ages. Come to www.boldcafe.org and feel your spirit refreshed.

Things I Don't Need in the New Year

God is the giver of all good things. Trusting in this, I find that I often treat prayer like a Christmas list, asking Him for the things that I want and that I need in my life. It's possible that He can't give me what I really need until I let go of a few things, such as old habits, and make more room.

So I'm going to start this new year by listing some needs that, with God's help, will be eliminated from my life.

I'll ask the Father to take away:

- **My need to be appreciated.** I don't need praise from those around me. My God is the only one I want to impress. It is His approval that counts. John 12:43
- **My need to 'fit in'.** Romans 12:2 and 1 Peter 1:14 tells me that I am not to conform to the pattern of the world around me but I must be transformed by the renewing of my mind.
- **My need to appear smart.** I don't need to be a great speaker to share the good news of Jesus Christ. The power is in the message of the gospel, not in my words. 1 Corinthians 1:17-21
- **My need to be physically attractive.** Other people look at physical appearance, but they don't see what the Lord sees. He sees my heart. 1 Samuel 16:7
- **My need to be first.** Paul writes that I shouldn't look for what is good for me, but I should be concerned with what is good for others. 1 Corinthians 10:24
- **My need to be wealthy.** Luke 16:13 tells me that God and money cannot both have first place in my life. Luke 16:19-26 tells a story that warns against putting too much value on possessions. I'll put God first and leave the rest to Him.
- **My need to be strong.** My own strength is never enough but the Bible tells me that God's power can be displayed best when I am weak. 2 Corinthians 12:9&10
- **My need to be 'good enough.'** I always try to be good and do what is right, but no matter how hard I work at it, I always fail. I will always fall short of God's glory. The amazing thing is that by His grace and through the work of Jesus Christ. I can rest in the fact that I am good enough. Romans 4:25 and Romans 6:18-19

Lynne Chapman

BellaOnline's Christian Living Editor



Christ Lutheran will be changing its subscription plan for *The Lutheran Magazine* beginning February, 2012. Each staff and council member will receive a subscription and 21 extra copies will be placed in the narthex for any member to take and read. You may continue receiving your own subscription at home, or give one as a gift, at \$7.95 for a 1 year subscription when ordered through the church office. Make checks payable to Christ Lutheran Church with "The Lutheran" in the memo. Please sign-up in the narthex or let Dawn know by January 15.

Address Updates

We have new addresses for the Donaldson's and Lola Wall. We wish them well in their new homes.

Dick & Elaine Donaldson
11501 Masonic Home
Bloomington, MN 55437

Lola Wall
1550 1st St N, Apt 106
Willmar, MN 56281

Are you missing your cake pan?

Please stop by and check out our growing collection of cake pans and pie plates in the kitchen. If you find one that belongs to you, please take it home.



Ongoing Ministry Projects:

- Murray County Food Shelf—collect food, personal care items, and birthday bags
- Troop Boxes—Thank you to everyone who has donated items for our troops. We have sent 18 boxes and will continue to collect items to send more.
- Cell Phone Collection—Donate your old cell phone to be recycled for the troops overseas.
- Radio Broadcast Ministry—February 5, 12, 19, and 26 are available; \$65 per Sunday. Checks can be made out to Christ Lutheran with "Radio Broadcast" in the memo.
- Quilting—January 23 and 24

Check out our website for more information about these projects.

Sewing Supplies Needed

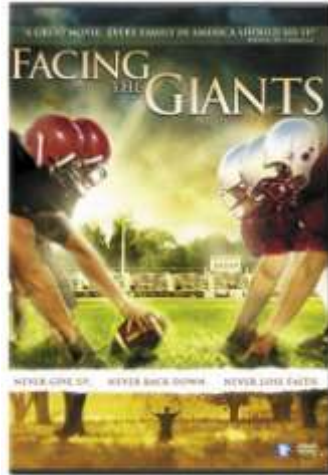
Willis Crow is making pillowcase dresses to send to Namibia, Africa in early February. He is in need of scraps of bias tape, ric-rac, lace, elastic and pillowcases. Donations can be brought to the office or given to Willis by the middle of January.

Simply Giving

If you might be interested in having a specific amount automatically deducted from your checking account monthly, weekly or bi-weekly, please contact the office for more information. This is a wonderful program that makes your giving easier and more consistent.

MOVIE NIGHTS at Christ Lutheran

Last winter we had fun with a series of movie nights, so we're bringing another string of films beginning this month. Babysitting will be provided. We won't be huddled around a tv screen; our portable video projector & screen turn the lounge into a pretty decent movie theatre!



Sunday, January 15th, at 6:30pm, join us for "Facing the Giants" ~ guys, it's a football movie!

In February we'll watch "Bella" ~ a love story with a twist; won the "Golden Tomato" award from Rotten Tomatoes with a user rating of 96.5, the highest of any film released in 2007.

Suggestions are welcome!

Ongoing Fellowship Activities:

- Game Night—January 23, 7:00 pm in the Chapel Lounge
- Chair Yoga & Gentle Stretching—Mondays, Tuesdays & Thursdays at 8:00 am in the Fellowship Hall

Find more information on our website.

Christ Lutheran Winter Fun Day!

Sunday, February 12th, bring your family over to **Great Bear Park** in Sioux Falls! We'll have a group rate for the afternoon and evening, to go tubing, skiing, or snowboarding. Have snow fun with your family, and have some fun with other members of our church family at the same time!



High School students can be thinking about an upcoming **TEC (Teens Encounter Christ)** retreat in March. A limited number of first-timers are able to attend each TEC, which is largely staffed by other high school students. Participants will hear other students share about their faith and life lessons, adult speakers, see dramatic presentations, party to great music, etc... Usually only 6 students are allowed from one town/school, so everyone is meeting new people. Students miss one Friday of school. Dates are **March 16-18**, at First Presbyterian in Sibley, IA (about 45 minutes from Slayton).

Sunday School Schedule:

January 8—Sunday School Resumes; Marriage Built to Last with Pastor Ted

January 15—No adult Sunday School

January 22—NO Sunday School for children or adults (Remember the Food Safety Training at 9:00 in the Chapel Lounge)

Confirmation Retreat at Shetek Bible Camp is coming up in March. All students are expected to participate. It's Friday March 23rd overnight to Saturday March 24th. Students will meet youth from other churches, play wacky games, learn about God & life, and meet cool camp counselors.

Confirmation Class Lock-in

Yes, I'm caving in again! Sunday January 22nd we'll have a lock-in for our confirmation students, 8pm to Monday 8am. There's no school that Monday -- and I've always told the kids I can't do a Saturday night lock-in because I'd be wrecked for Sunday morning worship. Parents -- I'll take all the help I can get, with food, extra supervision, etc. Let me know if you can help.

**A YEAR OF TIME**

As we look into 2012 we look at a block of time. We see 12 months, 52 weeks, 365 days, 8,760 hours, 525,600 minutes, 31,536,000 seconds. And all is a gift from God. We have done nothing to deserve it, earn it, or purchased it. Like the air we breathe, time comes to us a part of life.

The gift of time is not ours alone. It is given equally to each person. Rich and poor, strong and weak--every man, woman and child has the same twenty-four hours every day.

Another important thing about time is that you cannot stop it. There is no way to slow it down, turn it off, or adjust it. Time marches on.

And you cannot bring back time. Once it is gone, it is gone. Yesterday is lost forever. If yesterday is lost, tomorrow is uncertain. We may look ahead at a full year's block of time, but we really have no guarantee that we will experience any of it.

Obviously, time is one of our most precious possessions. We can waste it. We can worry over it. We can spend it on ourselves. Or, as good stewards, we can invest it in the kingdom of God.

The new year is full of time. As the seconds tick away, will you be tossing time out the window, or will you make every minute count?





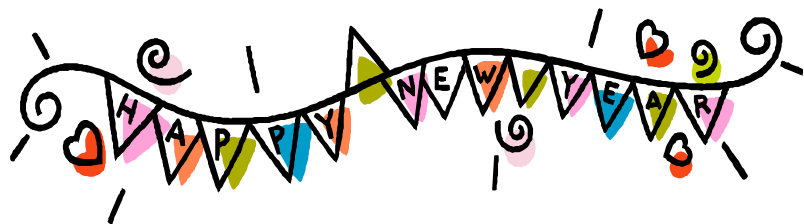
14 Keeley Island Dr
Slayton, MN 56172
507-763-3567
slbc@frontiernet.net
www.shetek.org

CANews FROM CAMP

*SLM... CHRIST-CENTERED RENEWAL
& LEARNING FOR ALL AGES!*

Mark Your Calendar

- *Cross Country Skiing – Jan. 7, 2012
 - *Snowshoe Hike – Jan. 8, 2012
 - *Valentines Supper – Feb. 12, 2012
 - *Service in the Cities – Feb. 17-19, 2012 (grades 7-9)
 - *Mother/Daughter Scrapbooking Retreat – Feb. 24-25, 2012
 - *Pre-Marriage Workshop – March 17, 2012
 - *Confirmation Retreat – March 23-24, 2012
 - *Confirmation Retreat – April 20-21, 2012
 - *Pre-Marriage Workshop – May 5, 2012
- Any questions call (507) 763-3567
or check out our website at www.shetek.org



Day Camp 2012

*Bring Shetek to your Church!!
Sign up for Day Camp Today.*

*For more information: contact Kristin at 507-763-3567 or visit our
website www.shetek.org*

New Year's Reflections

Looking back on the months gone by,
As a new year starts and an old one ends,
We contemplate what brought us joy,
And we think of our loved ones and our friends.
Recalling all the happy times,
Remembering how they enriched our lives,
We reflect upon who really counts,
As the fresh and bright new year arrives.
And when we ponder those who do,
we immediately think of you.
Thanks for being one of the reasons
we'll have a Happy New Year!

By Joanna Fuchs



Mother - Daughter SCRAPBOOKING RETREAT

February 24th & 25th, 2012
Relax, Recharge & SCRAP
Come enjoy a weekend away.

To enjoy scrapping, great company,
delicious food & to rest in God's presence.

Wish List

**Save your caps...need 1000 milk
jug caps, LED Christmas lights,
Eureka Timberline 4 person tents,
Canister Vacuum, Kitchen towels,
Bath Towels, Wash clothes, and
Golf cart. Thank you!!**

**Help send kids to
camp... Become a
Pelican/Timber
member... Call for a
Brochure Today**

Worship Assistants for January, 2012

Date	Acolytes	Lector	Greeters	Communion Servers	Ushers	Video	Power Point
Dec 31 5:15 pm		Max Whitehead		Barb Falk Barb Hakeman	Dick & Gayle Davidson LeRoy Johnson		Grant Everson
Jan 1 10:15 am	Brandon Winter Faith Bose	Lorie Kruse	Dale & Judy Lange	Jerry & Irene Moline	Luther & Pat Onken John & Darlene Meyer	Marv Nysetvold	Leon Kruse
Jan 7 5:15 pm		Terry Larson		Terry Larson Cheryl Krant	Dennis & Judy Lickness Linda Nelson		Linda Thovson
Jan 8 10:15 am	Mallory Loosbrock	Brenda Loosbrock	Betty Lee Joyce Larson		Mike & Brenda Loosbrock Rob & Kris Rohrer	Jon Hoyme	Arlyn Stokesbary
Jan 14 5:15 pm		Laurel Nelson		Laurel Nelson Karen Onken	Linda Wing, Burend Cuperus Chuck Blackmer		Mason Whitehead
Jan 15 10:15 am	Hannah Hegstad	John Meyer	Ron & Mary Mesner	Brittany Schneider Cassidy Paulzine	Keith, Linda, Aleshia & Courtney Rossow	James Berglund	Danielle Berglund
Jan 21 5:15 pm		Luther Onken		Kathy Behrends Luther Onken	Dick & Gayle Davidson Brad Bergerson		Jaden Boerboom
Jan 22 10:15 am	Wesley Leyson	Kris Rohrer	Rob & Kris Rohrer		Jerry & Irene Moline Dale & Judy Lange	Linda Nelson	Dylan Nelson
Jan 28 5:15 pm		Marcia Kunze		Brenda Loosbrock Marv Nysetvold	John, Kim & MacKenzie DeLong		Jon Hoyme
Jan 29 10:15 am	Camryn Boerboom	Dennis Opdahl	Keith & Linda Rossow		Dennis, Janet & Alex Opdahl Gordon Opdahl	Arlyn Stokesbary	Greg Moberg

Bread Bakers: Marlys Hegstad, Char Busse
 DVD to City Hall: Betty Lee

Thank you to everyone who is helping during worship services at Christ Lutheran Church this month. If you cannot fulfill your ministry responsibilities, please find your own substitute and let the office know of your replacement. Thank you!!!

January Birthdays

- | | |
|------------------------|---------------------|
| 1 Lila Anderson | 18 Brooke Ackerman |
| Brad Bergerson | 19 Alyssa Anderson |
| 2 Nancy Moberg | Thea Schneider |
| 3 Deb Meyer | 20 George Crompton |
| Britta Streff | Michael Petersen |
| Karna Tommeraasen | Bonnie Suckow |
| 4 Kaden Mastbergen | 21 Pastor Ted Kunze |
| Emily Gass | Benjamin Loosbrock |
| 5 Elise Rohrer | Cassidy Paulzine |
| 6 Mary Everson | Nicole Platt |
| Brooke Neilson | 22 Brett Behrends |
| Gordon Opdahl | Jaden Boerboom |
| Rob Rohrer | Gaylene Kirchner |
| Darren Schuur | 24 Trey Johnson |
| 7 Ruth Roeder | 26 Edwin Nepp |
| Sharon Staples | 28 Kori Estum |
| Court Tommeraasen | Brandon Swart |
| 8 Mitchell Bonnstetter | 29 Kora Lindberg |
| Donna Carnahan | 30 Alexandra Kleven |
| Amy Loosbrock | Mariella Danneman |
| Melissa Schmidt | 31 Abigail Erickson |
| 9 Brady Johansen | Daniel Sagmoe |
| Kim Johnson | |
| 12 Marion Petersen | |
| 13 Jesse Estum | |
| Jenna Mollema | |
| 15 David Bennett | |
| Terri Swanson | |
| 17 Elyse Paulzine | |
| Floyd Schadt | |
| Elizabeth Thomsen | |
| Emily Wajer | |

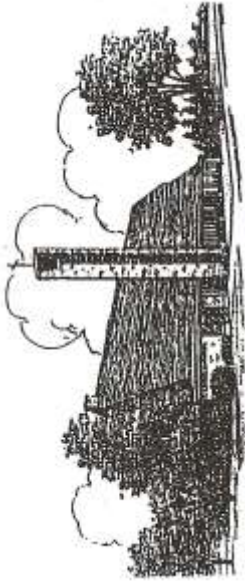
January Anniversaries

- 12 Jeff & Brenda Bose (1991)
 23 Floyd & Irene Schadt (1948)
 James & Charlotte Larson (1971)

Please contact the office if you notice a mistake or omission on the Birthday or Anniversary lists. Thanks for your help!

Take Time

- Take time to live – it is one secret to success.
 Take time to think – it is the source of power.
 Take time to play – it is the key to freedom and relaxation.
 Take time to read – it is the gateway to knowledge.
 Take time to worship – it washes the dust of earth from your eyes.
 Take time to love – **if you don't, it will fade away.**
 Take time to dream – it hitches the soul to the stars.
 Take time to laugh and pray – these are two things **that lighten life's load.**
 Take time to be alone with God – **It is life's only** lasting investment.



CHRIST LUTHERAN CHURCH
2959 QUEEN AVENUE
SLAYTON MN 56172

Phone: 507-836-8291
Fax: 507-836-8789
Email: slaytonchristlutheran@gmail.com

RETURN SERVICE REQUESTED



*God's work.
Our hands.*

Visit us on the web at ...

christinslayton.lutheranweb.net

Published 11 times a year
Volume 2012, Issue #1
January 6, 2012

NONPROFIT ORGANIZATION
US Postage Paid
Permit #4
Slayton MN 56172-1513